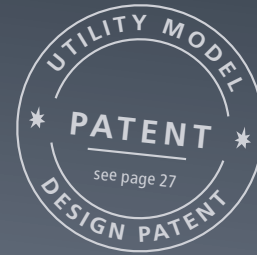


The Catalogue

2024/2025

new



The HybridCleanox:
Battery and inverter technology
under one bonnet

Electrochemical
Weld Cleaning, Polishing, Marking

Content

About Reuter	2
The process	3
The HybridCleanox	4
The Cleanox series	6
The AkkuCleanox	8
The SuperCleanox family	10
The AutoFeed system	12
The Signox series	14
Accessories for marking:	
- Marking electrolytes	16
- Marking set	16
- Long-term templates	17
- Label printer	17
Carbon fibre brush	18
Cleaning electrolytes	20
www.reuter.works	21
Surface after-treatment	22
Surface cleaners	23
WorkStations	24
Preview	28

A complete overview of all Reuter products and prices can be found in our current price list.

We reserve the right to make changes.
Status: February 2025

Magic metal works – made in Germany

May we introduce ourselves?



in Erkrath near Düsseldorf, Germany, Reuter GmbH & Co. KG manufactures state of the art technology for electrochemical cleaning, polishing and marking. All the devices offered have been developed by us and are produced in series. Numerous technologies have been patented or are subject to utility model protection.

Our in-house claim ‚magic metal works‘ is the motivating power behind each device line:

- smart solutions that can replace significantly more complex technologies
- ease of use
- scalable product range – for trade and industry
- 100 % Made in Germany
- high continuous loading capability with 100% duty cycle
- outstanding price-performance ratio

A certified quality management system is in place for the manufacture and distribution of the entire Reuter product range.

Do you have questions about our products – or perhaps a special task which is proving to be difficult? Please feel free to contact us. Send us your samples. We will work it out for you.



Mechanical engineer and welding engineer Dipl.-Eng. Olaf Reuter, owner of Reuter GmbH & Co. KG, stands for solid know-how in this sector. Over 25 years of experience in arc welding technology and voluntary engagement in DIN committees stands for practical expertise.



Electrochemical Cleaning, Polishing, Marking

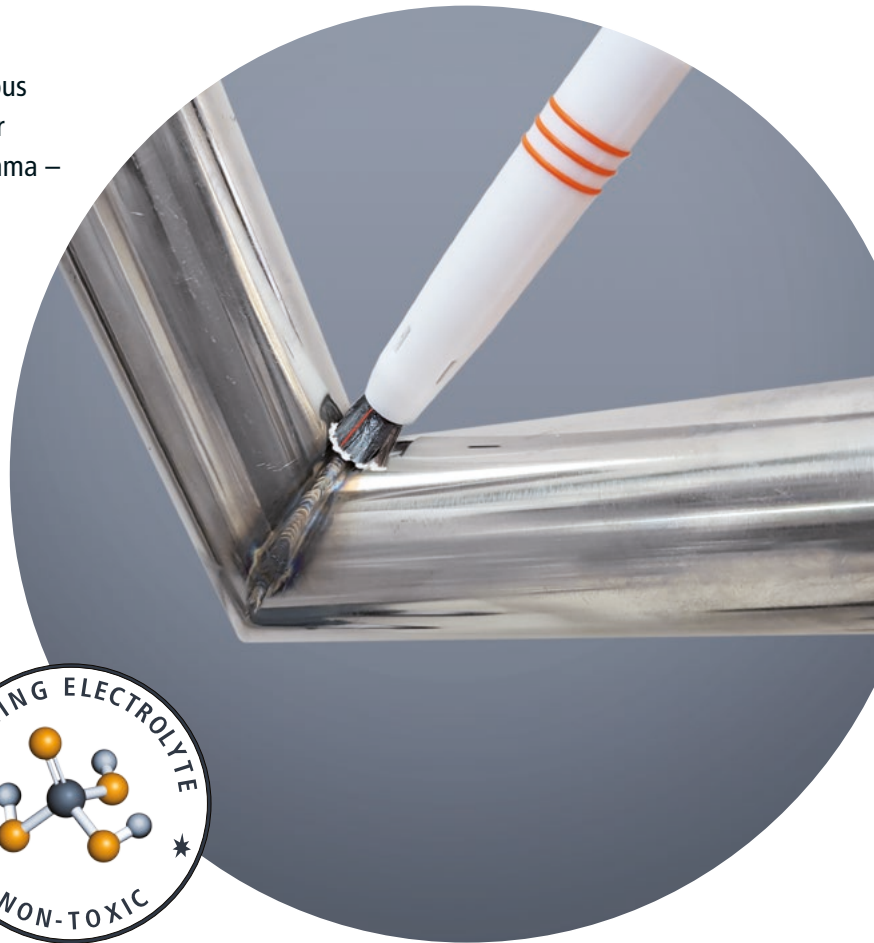
The process

Take a million carbon fibres, a good 100 A continuous current, plus the right electrolyte: the welder has never polished so quickly. This solves the main welding dilemma – tarnish, scaling and rust, which are caused by the destruction of the passive layer during welding, are simply brushed away.

This is made possible by the high energy density and the conductivity of the up to 4.5 million carbon fibres: electric arcs are created at the tip of the fibres. These remove tarnish, oxidation and even light scaling in a flash, without damaging the surface.

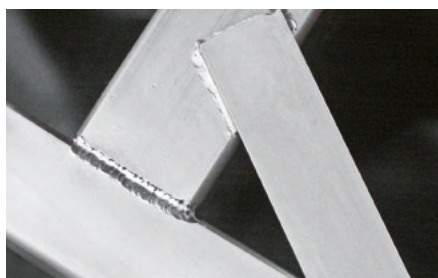
Our cleaning electrolyte is the non-toxic food additive E338, also known from cola drinks. It cools, increases the electrical conductivity and protects against renewed overheating by evaporation. The oxygen split off in the process combines on the metal surface to form chromium oxide: in this way, the protective passive layer is restored in the same operation. This effect has been certified by the Federal Institute for Materials Research.

The cleaning effect is therefore not created by etching or grinding, but is gentle on the surface due to the extremely high energy density. When brushing, the carbon fibres nestle exactly to the shape of the workpiece; by flexibly extending the fibres from the PTFE sleeve, corners and crevices can also be reached. Suitable brush shapes and sizes are available for every cleaning task.



Mirror-smooth polishing: Our switchable AC/DC units also allow polishing to a mirror-smooth surface in direct current (DC) mode. Heavier discolourations can be removed and levelled, matt areas in the HAZ can be brought to the desired gloss level.

Forgery-proof marking: You can also apply your own signatures to your workpieces with the help of a marking template or with a label printer. Dark-marking introduces oxidation into the surface; light-marking removes parts of the surface – like an engraving, but not dark. Both processes are durable and resistant to chemicals or abrasion – which is why they are often used on surgical instruments, tools and sanitary fittings.



new

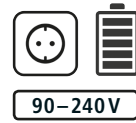
The HybridCleanox family

Two hearts beat in his chest



One + One = Three. The new HybridCleanox combines compact inverter technology with powerful lithium-ion batteries. This new, patent-pending technology enables the construction of very light, compact units with the power of a transformer unit that weighs 6 times as much.

The inverter supplies the base load and charges the batteries at the same time. When the energy demand is very high, the inverter and the batteries together deliver currents of 150 A – overloading the inverter or the power grid is impossible. And as a bonus, the batteries also provide the juice for up to 15 minutes of mains-independent work.



Our HybridCleanox devices are sold as complete kits, giving you everything you need to get started straight away. The picture shows the HybridCleanox 5.0 device set.



The rear of the HybridCleanox 5.0 with holder for electrolyte reservoir, servo pump and level sensor.

HybridCleanox 3.0: The power dwarf

The most powerful cleaning device in the compact class: the HybridCleanox 3.0 brings the concentrated power of a SuperCleanox in a device weighing only 5.5 kg. Three soft-touch keys make cleaning, polishing and marking child's play. The smooth setting of all parameters is shown on a large colour display.

With guaranteed 100 A power, the lightweight is the ideal construction site tool, especially as you can work self-sufficiently for up to 15 minutes without mains power, cables or plugs.

The device comes as complete kit together with the new ergonomic cleaning handle and XL performance brush as well as all other accessories you need for your work.

Device set HybridCleanox 3.0

Item no.: EP-00-013
Power output: 1.400 VA

HybridCleanox 5.0: The prodigy

The HybridCleanox 5.0 is our new high-end device. It combines all the strengths of Cleanox, SuperCleanox and AkkuCleanox – and also has a fully automatic electrolyte supply that significantly increases your productivity.

Two built-in inverters together with the lithium-ion batteries deliver an incredible continuous output of 1,800 watts and 150 A with an efficiency of 98%. At the same time, the batteries allow 15 minutes of work without mains power. Furthermore, our prodigy can be equipped with a robot interface.

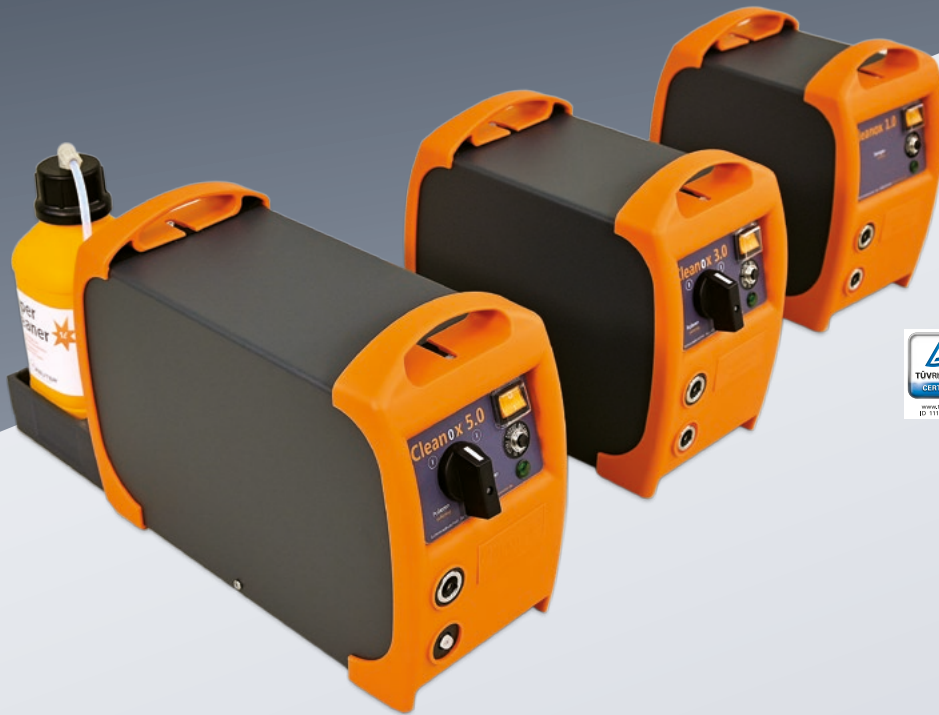
The device set includes the AutoFeed handle with XL AutoFeed performance brush as well as all other accessories.

Device set HybridCleanox 5.0

Item no.: EP-00-015
Power output: 1.800 VA

The Cleanox family:

Full flexibility for workshop & assembly



- ✓ **New:** with ergonomic cleaning handle
- ✓ optional with fully automatic electrolyte supply



Video:
Cleanox 5.0
in action

Compact & light, powerful & robust: The Cleanox family is designed for metal workers who want to use their cleaning equipment flexibly – whether in the workshop or on the road during assembly. Plastic and aluminium make the three devices surprisingly light and extremely robust. At the same time, they are among the most powerful on the market: 80 A continuous current at 100 % duty cycle, plus pulse currents of over 200 A – stunning values, that make our competitors nervous.



Our Cleanox devices are sold as complete kits, giving you everything you need to get started straight away. The picture shows the Cleanox 3.0 device set.



The rear of the Cleanox 5.0 with holder for electrolyte reservoir, servo pump and level sensor.

Cleanox 1.0: The lightweight

With the Cleanox 1.0 set, we bundled a package that will convince you of the Reuter technology: easy to operate, robust, powerful and incredibly affordable.

As a pure AC device, the Cleanox 1.0 specialises in cleaning weld seams. The easy operation and the light weight of only 5.2 kg make the unit ideal for construction sites and assembly. At the same time, with 80 A continuous current, the Cleanox 1.0 delivers as much power as most stationary devices.

The device set comes with the practical Performance brush L and is also suitable for dark marking.

Device set Cleanox 1.0*

Item no.: EP-01-011
Power output: 1.000 VA

Audited safety – certified by TÜV Rheinland

Cleanox 3.0: The workhorse

The Cleanox 3.0 is an AC/DC device that can not only clean but also polish and is also suitable for light and dark marking.

With 1,250 VA power, it enables cleaning and polishing and develops up to 80 A continuous current (100% duty cycle) or 200 A pulse current. You are thus well equipped for most cleaning tasks.

The device set includes the large XL Performance brush. Together with the optional marking set (see page 16), you can also apply light and dark markings – e.g. logos or type plates.

Device set Cleanox 3.0*

Item no.: EP-01-013
Power output: 1.250 VA

Audited safety – certified by TÜV Rheinland

Cleanox 5.0: The automat

The Cleanox 5.0 has all the strengths of the Cleanox 3.0 – but also has an automated electrolyte supply. This increases your productivity immensely, as you no longer have to put down the brush to pick up electrolyte fluid. And on top of that, you save a lot of precious chemistry!

Reuter's patented AI amount regulation calculates the optimal amount of electrolyte, which is then pumped directly into the carbon fibre brush by a servo pump. As soon as the brush is lifted off the workpiece, the electrolyte supply stops – all fully automatic!

Device set Cleanox 5.0*

Item no.: EP-01-015
Power output: 1.250 VA

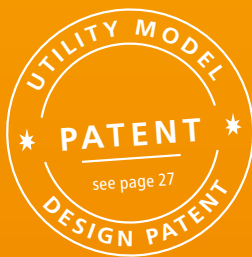
You can find our recommended prices in the current product list.

The AkkuCleanox

Freedom for weld seam cleaning



**The first battery-operated
weld cleaning device
worldwide**



High up on the wind turbine, in the middle of the stainless steel silo, somewhere on the scaffolding: What to do when no extension cable is long enough? With the AkkuCleanox you can get anywhere. Weighing just 8.5 kg, it is one of the lightest devices on the market – and extremely powerful with up to 100 A continuous current. The operating time of the battery in standard mode is up to two hours.



Our AkkuCleanox devices are sold as complete kits, giving you everything you need to get started straight away. The picture shows the AkkuCleanox device set including the charging booster.

AkkuCleanox: The outdoor specialist

This is made possible by innovative battery technology combined with powerful inverter technology. We have packed the whole thing in an ultra-light carbon sandwich casing and equipped it with a large colour display and a user-friendly interface: The perfect device for outdoors, offshore and offline.

With the charger supplied, the charging time of the AkkuCleanox is 8 hours. This can be accelerated considerably with our charging booster: the battery is 95% recharged in just 30 minutes. Alternatively, you can use it for mains operation: coupled with the charging booster, the AkkuCleanox runs at 100% duty cycle for an unlimited time without the battery discharging. This means that your mobile device can also be used in the workshop without any restrictions.

Device set AkkuCleanox

Item no.: EP-01-050

Power output: 1.250 VA

Charging booster

Item no.: EP-07-160

Device set AkkuCleanox including charging booster

Item no.: EP-01-050-B

You can find our recommended prices in the current product list.

The SuperCleanox family:

For heavy-duty industrial use

3.450 VA



optional also
with fully automatic
electrolyte supply

see page 12

Power to the industry: Proven for years with well-known customers in multi-shift operation, performance and reliability are the top priority here. The SuperCleanox delivers up to 600 A pulse currents to the workpiece – that's Champions League. This power allows super-fast and uninterrupted work – even with extra-large brushes, large surface cleaners or with cables up to 100 m long.



Video:
SuperCleanox
in action

Our SuperCleanox devices are sold as complete kits, giving you everything you need to get started straight away.
The picture shows the SuperCleanox device set.

SuperCleanox VI HD The power pack

At 3,450 VA, this is currently the most powerful weld cleaning device in the world.

Three power levels cover all requirements: from gentle cleaning of thin, TIG-welded metal sheets to polishing strongly tarnished or scaled MAG welding seams. The power electronics were adapted to provide the high output. Thermal fuses only switch off above 140 A permanent current (100% duty cycle) or 600 A pulse current.

Brush and earthing cables with a cross-section of 16 mm² provide power to the work piece without electrical and thermal losses and without interruption during permanent operation, using cables with a length up to 100 m.

Device set SuperCleanox VI HD
Item no.: EP-01-017 HD
Power output: 3.450 VA

SuperCleanox VI The all-rounder

The SuperCleanox VI has set the standards in the market for a long time: its output of 2,500 VA provides 80 A continuous current (100 % duty cycle) or 200 A pulse current to the work piece. Three power levels each for cleaning and polishing solve almost any cleaning task: all welding seams, from TIG-welded thin metal sheets to MAG-welded beams, can be cleaned and polished in heavy-duty industrial applications.

You can continue to use cleaning and polishing handles with rigid carbon electrodes and felts – but you can also work at top efficiency with a large surface cleaner or the TripleBrush.

Device set SuperCleanox VI
Item no.: EP-01-017
Power output: 2.500 VA

SuperCleanox IV+ Enter the Champions League

The SuperCleanox IV+ is designed for heavy-duty, continuous use in 3-shift industrial applications. An output power of 1,500 VA facilitates cleaning and polishing at two power levels and provides up to 80A continuous current (100% duty cycle) or 300 A pulse current. This output power is completely sufficient for most cleaning tasks.

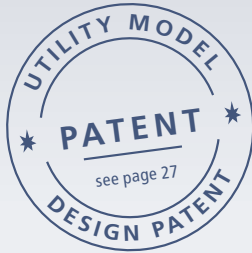
As every SuperCleanox, the SuperCleanox IV+ is an AC/DC device, which is perfect for cleaning and polishing as well as for light and dark marking.

Device set SuperCleanox IV+
Item no.: EP-01-021
Power output: 1.500 VA

You can find our recommended prices in the current product list.

The AutoFeed system

The first fully automatic electrolyte supply



- ✓ Compatible with any cleaning device
- ✓ enables significantly faster working
- ✓ reduces fluid consumption



Just brush it. The electrolyte flows all by itself.

A microprocessor calculates the optimum amount of electrolyte, which is then fed directly into the carbon fibre brush by a servo pump. As soon as the brush is lifted off the workpiece, the electrolyte supply stops and a short back pump prevents dripping – all fully automatic!



Video:
MagicBox
in action

The AutoFeed system inside the compact MagicBox

All the patented Reuter technology for our AutoFeed system is housed in the compact MagicBox. You simply connect it to your cleaning device. A wide-range power supply draws the voltage directly from the device. A sensor measures the cleaning energy and the microprocessor calculates the exact amount of electrolyte for your cleaning task. This is then pumped by the servo pump through hose system and AutoFeed handle directly into the carbon fibre brush. This is how intelligent technology works – combined, programmed and patented by Reuter.

Even a 5l canister with the electrolyte liquid is stored inside the MagicBox (signal transmitter for empty supply included). Of course, all components are acid-proof; due to the use of mild Reuter electrolytes, hoses and AutoFeed handle do not have to be cleaned after use.

And the special highlight: The MagicBox is compatible with any welding seam cleaning device on the market!

MagicBox
Item no.: EP-07-760



AutoFeed handle

Further information

on carbon fibre brushes see page 19.

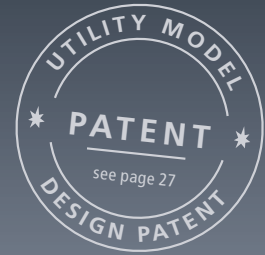
Different hose packages, brushes and other accessories as well as our recommended prices can be found in the current product list.



With the new TripleBrush
you will polish 125cm² in just under 60 seconds
to a high gloss. More information: page 19

The Signox series:

Marking for eternity



BRIGHT MARKING DARK MARKING

- ✓ permanent
- ✓ forge-proof
- ✓ low cost



Type plates, logos, bar codes: the Signox device series is specialised on forge-proof marking on all electrically conductive surfaces. Electrolytic marking is a very cost-effective and economical method. After only 3–4 seconds you obtain a high-contrast, permanent signature: corrosion free, abrasion, acid and sterilisation resistant. It is therefore often used for tools, surgical instruments, tools, sanitary fittings or cookware.



The AkkuSignox+ device set



AkkuSignox+ The freedom of the word

Maximum flexibility without a socket, USB and mains cable: our patented AkkuSignox is a mains-independent mobile device; it introduces oxidation into the metal surface to create dark brown to deep black signatures. The battery of our AkkuSignox creates up to 250 dark signatures before you need to recharge.

Our AkkuSignox comes in a case with everything you need to get started right away. We also offer two other bundles: with a Bluetooth- or an USB-printer, you design your signature on the spot on your laptop and simply print out the marking template.

AkkuSignox+ set in a case
Item no.: EP-01-034

AkkuSignox+ set in a case with Li-Ion Bluetooth printer
Item no.: EP-01-035

AkkuSignox+ set in a case with battery USB printer
Item no.: EP-01-036

Signox II The powerhouse

The workshop device for light and dark marking: The Signox II is connected to the mains and comes without a printer – but the powerful transformer and the large rectifier provide considerably more power. This enables the use of larger templates with up to 2,400 dpi as well as fast, powerful marking of larger areas. In addition to dark marking, the Signox II is also capable of light marking – which looks very classy, similar to laser engraving.

Signox II set in a case
Transformer device for 230V mains supply
Item no.: EP-01-024

Further sales units, accessories and template service as well as all recommended prices can be found in our current product list.

Accessories for marking

Everything from one source

We supply everything you need for marking:
devices, templates, electrolytes and accessories.
So you can be sure that everything will work perfectly.



Marking electrolytes for (almost) every metal

Reuter carries a variety of electrolytes for light and dark marking of different materials: stainless steel, rust-sensitive steels, tool and carbon steels, aluminium, gold, brass and bronze, copper and zinc, titanium, chromium-plated and nickel-plated surfaces. All electrolytes are available in bottles of 100 ml, 500 ml, 1 l and 5 l.

Various marking electrolytes
Item no.: EP-04-004 ff

The marking set for your Cleanox

The marking set turns your Cleanox into a fully-fledged marking station. It is already included in the SuperCleanox set. With it you have everything you need for marking: a marking handle and a marking electrode, connection cable, electrolytes, felts and O-rings. We have also included a sample template for you to try out.

Marking set
Item no.: EP-02-050



Marking with long-term templates



Marking with disposable templates

Long-term templates from Reuter

Our long-term templates can be used up to 10.000 times. Due to the high resolution of 2.400 dpi even very small fonts up to 4 points can be signed on the workpiece. An optional plastic frame gives the template more stability and makes it easier to align on the workpiece. The maximum template size is 80x50cm (4.000cm²).

Long term template, framed
Item no.: EP-05-003 ff

Long-term template, unframed
Item no.: EP-05-007 ff

Label printer for disposable templates

With the help of a labelling device, you create disposable templates for your signature yourself – the ideal solution for marking your products with individual product numbers. On the display printers, you can create lettering and numbers on the spot and print them out directly. By connecting to the PC, you can incorporate logos, frames or barcodes into the label layout. Reuter sells Brother labelling devices and accessories for different applications.

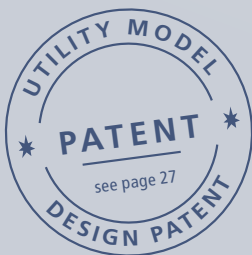
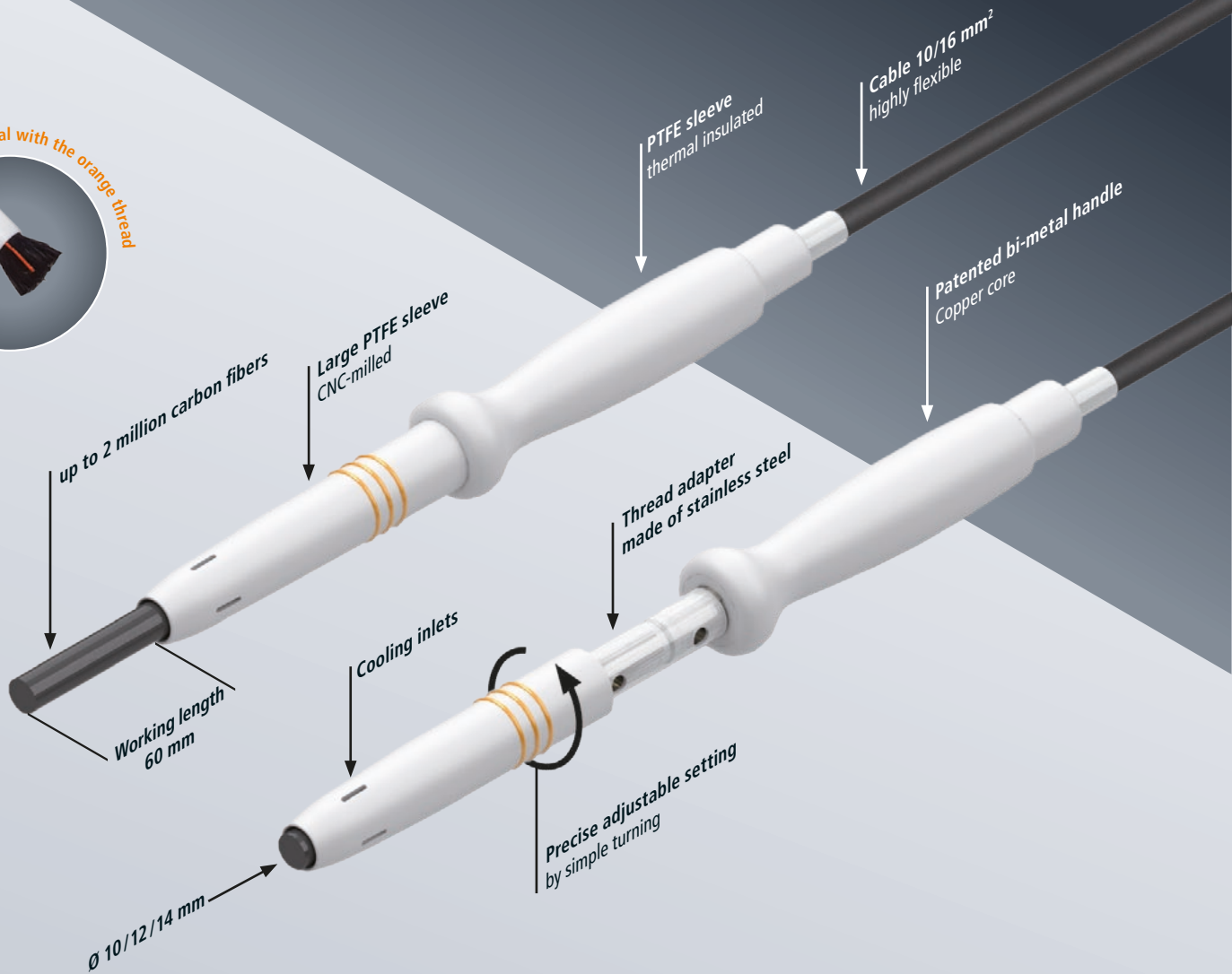
Various label printers
Item no.: EP-05-208 ff



Our template service as well as all sales units, further accessories and recommended prices can be found in the current price list.

Carbon fibre brushes from Reuter

Ergonomics meets cost efficiency



Carbon fibre brushes from Reuter are characterised by permanent acid resistance, robust durability and highest conductivity. The brush bodies are made of high-alloy stainless steel – oxidised threads and contact problems are a thing of the past. Handles and sleeves made of PTFE easily withstand process-related temperatures above 200° C.

The carbon fibre brushes we have developed are manufactured on tools we have designed ourselves. Only the best quality carbon fibres from leading manufacturers are used.



The Performance Brush for manual use

1 million, 1,5 or up to 4,5 million carbon fibres with 60 mm working length bring more power to the workpiece than any competitor's product. With the solid, CNC-turned PTFE sleeve, you set the required brush length quickly and precisely by simply turning it. The thread adapter also fits any old handle. At the same time, it prevents the thread between the brush and the handle from oxidising – if the thread does become scorched, all you have to do is replace the inexpensive adapter.

We deliver our Performance Starter Sets including adapter, PTFE sleeve and 5 brushes in the respective size. Assembly pin and spanner for quick assembly are also included.

Performance Starter Set L
Item no.: EP-02-937

Performance Starter Set XL
Item no.: EP-02-927

Performance Starter Set XXL
Item no.: EP-02-947

Performance Starter Set MIX
Item no.: EP-02-931

Further sales units and all recommended prices can be found in our current price list.

The Performance Brush for the AutoFeed

Since 2020, AutoFeed, the first fully automatic electrolyte feed, has revolutionised the process (see page 12). The perfect amount of electrolyte always flows directly into the size L, XL or XXL brushes via the ergonomically shaped AutoFeed handle – so here, optionally 1 million, 1.5 or even 2 million carbon fibres bring full power to the workpiece.

Performance AutoFeed brush L
Item no.: EP-02-962

Performance AutoFeed brush XL
5er Set | Item no.: EP-02-963

Performance AutoFeed brush XXL
5er Set | Item no.: EP-02-964

Brand new is the TripleBrush: The electrolyte fluid is simultaneously fed onto the workpiece via three brushes. Three times 1.5 million carbon fibres – you can polish 125cm² to a high shine in just 60 seconds! But be careful: the TripleBrush needs a lot of power and can only be operated with the SuperCleanoxVI HD or the new HybridCleanox.

AutoFeed TripleBrush
Item no.: EP-07-960

For further carbon fibre brushes, sales units, accessories and recommended prices, please refer to the current price list.



Performance Starter Set XL

Cleaning electrolytes

Guaranteed non-toxic



Chemical production at Reuter

Electrolytes for cleaning & polishing

With the Reuter electrolytes you clean and polish super fast in one step. The surface is then protected against corrosion. Immediately.

The high processing speed is not least due to the formula: We use only high-quality natural mineral acid – and do not use stabilisers, sulphuric acid or tensides. Our mineral acid is guaranteed non-toxic and, among other things, approved as food additive E338 – for cola drinks, for example. We produce all electrolytes ourselves and fill them ourselves in modern automated filling plants.

The Cleaner is recommended as an electrolyte for cleaning slightly oxidised TIG welds, the SuperCleaner is suitable for heavily tarnished or oxidised welds. And the Polisher is used for polishing stainless steel surfaces, but is also ideal for all cleaning tasks.

All Reuter electrolytes come in super-tight bottles and canisters with UN hazardous goods approval: indestructible and in the stylish Reuter orange. You have the choice between the 1-litre bottle, the 5-litre canister or the 25-litre canister.



Cleaner

1 litre – Item no.: EP-04-130
5 litre – Item no.: EP-04-041
25 litre – Item no.: EP-04-140

SuperCleaner

1 litre – Item no.: EP-04-131
5 litre – Item no.: EP-04-042
25 litre – Item no.: EP-04-141

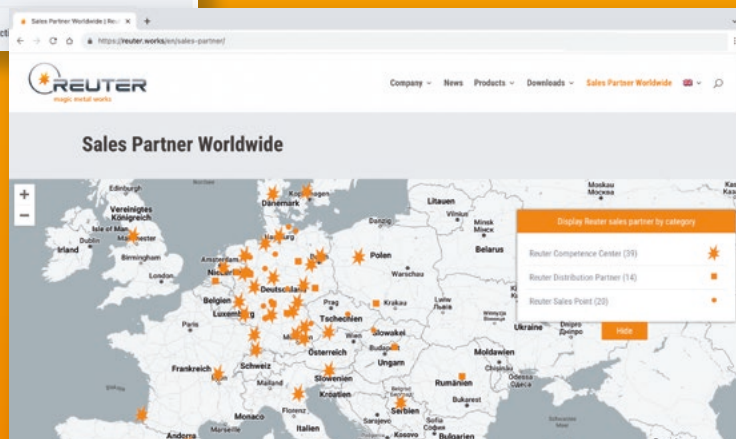
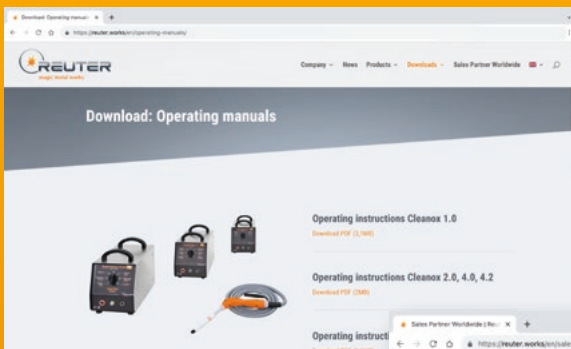
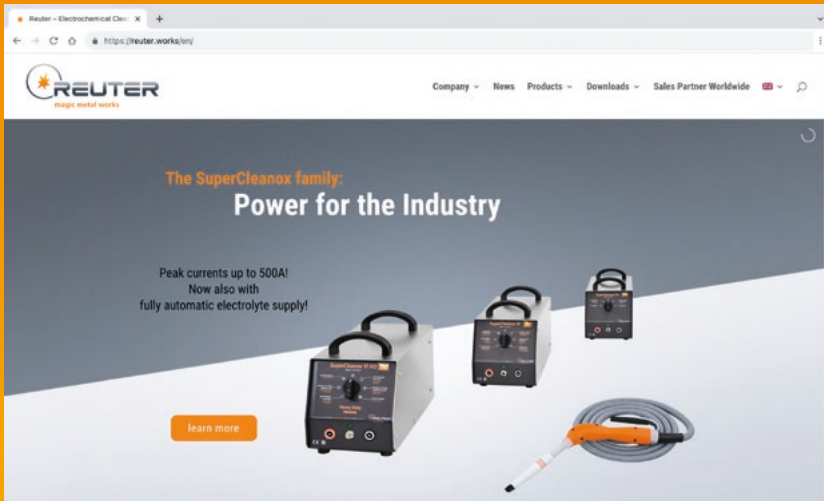
Polisher

1 litre – Item no.: EP-04-132
5 litre – Item no.: EP-04-043
25 litre – Item no.: EP-04-142

Our recommended prices
you will find in the current price list.

www.reuter.works

Know how, know where, know when



Reuter on the net:

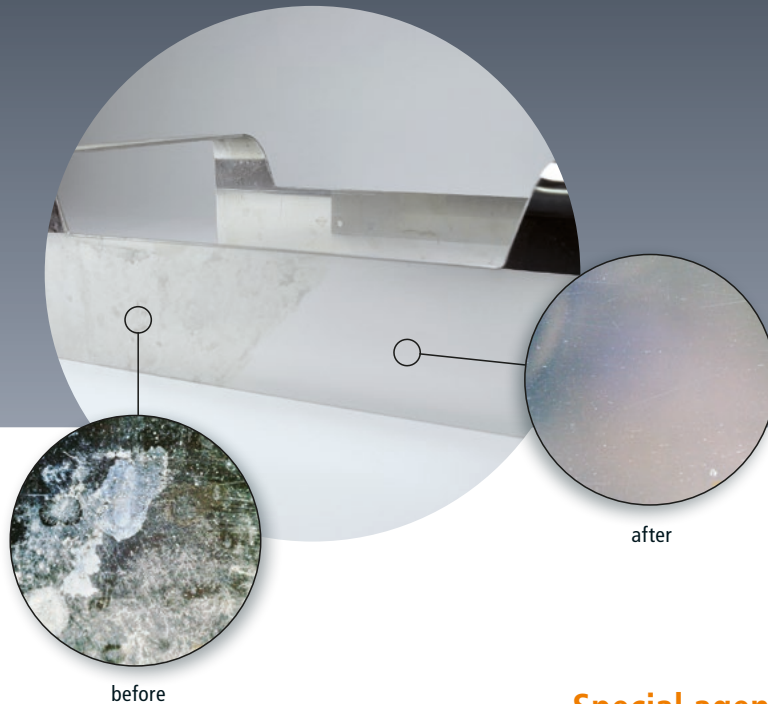
- ✓ Sales partners worldwide
- ✓ Operating instructions & safety data sheets
- ✓ News & events

www.reuter.works

Top products deserve premium service and competent consultation. That is why we do not sell our products via an online shop but exclusively through qualified sales partners.

Surface after-treatment

For a shiny result



before

after

Care products for pre- and post-treatment

The **Pre&Post Cleaner** is a light, non-flammable cleaning and neutralising agent that does not require labelling. It is suitable for degreasing BEFORE welding; AFTER weld cleaning it cleans and neutralises the surface and prevents the formation of white spots.

Pre & Post Clean 500ml
Item no.: EP-04-912



Our **StainlessCare Spray** is the perfect stainless steel care product for treatment AFTER electrochemical cleaning. The light cleaning effect does not attack the fresh passivation, produces an even light shine, has an antistatic effect and protects against fingerprints.

Stainless Care Spray 400ml
Item no.: EP-04-950



Special agent for correction

White spots after electrochemical cleaning are avoidable – but should they occur, our two specialists can help: the **SFC** chemically causes a slight removal, the **Abrasive Cleaner** works chemically and mechanically. The liquids are applied with a cloth or cleaning pad, then neutralised with our **Pre&Post Cleaner** and rinsed off with water.

SFC Stainless Finishing Cleaner 1l
Item no.: EP-04-803



Abrasive Cleaner 100ml
Item no.: EP-04-908



Surface Cleaner

For the big picture



Electrochemical cleaning for large surfaces

Our surface cleaners with widths from 10 to 35 cm are suitable for cleaning, de-rusting and passivating large stainless steel surfaces such as tanks, silos or facades. For efficient cleaning, the surface cleaner requires the highest possible energy output; it can therefore only be used together with our most powerful models. Welded seams should still be cleaned with the carbon fibre brush beforehand.

Surface cleaner, 10 cm wide
Item no.: EP-02-991

Surface cleaner, 20 cm wide
Item no.: EP-02-992

Set surface cleaner, 35 cm wide
with telescopic pole up to 180 cm
and 18l-bucket
Item no.: EP-02-913

The **10cm surface cleaner** we now supply is equipped with 5m hose and cable for automatic electrolyte supply. After connecting it to our MagicBox (see page 12) your productivity will go through the roof while the electrolyte consumption is declining.

Surface cleaner, 10 cm wide
with automatic electrolyte supply
Item no.: EP-02-891

new



10cm surface cleaner
with 5m-hose package for
automatic electrolyte supply



35cm-surface cleaner set

WorkStations from Reuter

A workplace made to measure



Collection tray with GRP grating and a drain

Extraction system made of acid-proof PP with large activated carbon filter 950m³/h < 60 db

Doors, side walls and shelves made of acid-resistant plastic

Plenty of space for cleaning device, MagicBox and accessories

Collection canister with level sensor

lockable swivel castors

WorkStation XL PRO



Video:
WorkStation XL
in action

Your workplace for weld seam cleaning:

- in the versions S, M, L, XL Pro und XXL Pro or as a customised special design
- with extensive accessories:
 - extraction systems
 - neutralization plant
 - waste water spreading
 - hydrojet gun



Your Cleanox becomes a full-fledged workplace

The WorkStations made of acid-resistant materials turn your Cleanox into a fully-fledged workplace. They offer sufficient space for the unit and accessories; a work surface with a drain and collection tank for water and electrolytes enables productive working. At the same time, a GRP grating protects your workpieces from damage and prevents unwanted power transmission.

Choose between our mobile models S, M, L, XL Pro and XXL Pro – or have your own WorkStation or stationary extraction table configured according to your needs.

Together with our extensive range of accessories, you can make your workplace particularly efficient, ergonomic and environmentally friendly.



WorkStation S

Dimensions: 610 x 460 x 950 mm
Item no.: EP-06-241

WorkStation M

Dimensions: 800 x 400 x 1000 mm
Item no.: EP-06-030

WorkStation L

incl. drain and waste water canister
Dimensions: 1200 x 800 x 1000 mm
Item no.: EP-06-020

WorkStation XL Pro

incl. drain, waste water canister, extraction, control cabinet
Dimensions: 1200 x 800 x 1000 mm
Item no.: EP-06-015

WorkStation XXL Pro

incl. drain, waste water canister, extraction, control cabinet
Dimensions: 2000 x 1000 x 1000 mm
Item no.: EP-06-035

WorkStations from Reuter



Two powerful fans
and four filters on the back



The extraction table for long-term use

The robust stainless steel construction is designed for multi-shift industrial use. Two radial fans deliver an incredible 1,900m³/h extraction capacity at a whisper-quiet 65dB. The side windows can be folded in and the roof electrically retracted - so you can process workpieces of any size. The perforated stainless steel extraction wall can also be folded in. With its large castors, this complete workplace can then be transported safely and easily.

As an option, we can equip the extraction table with a smooth hydraulic height adjustment of up to 40 cm – that's balm for your spinal discs.

Extraction table

Dimensions: 1800x1100x700

Item no.: EP-06-055

Extraction table with height adjustment

Dimensions: 1800x1100x700–1100

Item no.: EP-06-066



The water treatment stands completely on its own

Our fully automatic SPS-controlled water treatment plant purifies waste water from electrochemical cleaning in accordance with every legal requirement up to drinking water quality.

After neutralisation of the waste water, a 9-stage filter system reliably filters out sediments, phosphates, heavy metals and salts. The entire system, including diaphragm pump and collection tank, is mounted in a stable frame. It is extremely mobile on four castors.

Water treatment StandAlone
Item no.: EP-06-330



Rinse-and-Dry Set including Hydrojet Gun

The Hydrojet Gun rinses your workpiece after weld seam cleaning in a water-saving way with high pressure and then dries it with compressed air. Lightning fast.

The complete Rinse-and-Dry Set comes with a deionised water filter, compressed air filter, hydrojet gun and a practical holder for the gun.

**Rinse-and-Dry Set incl.
Hydrojet Gun**
Item no.: EP-06-070



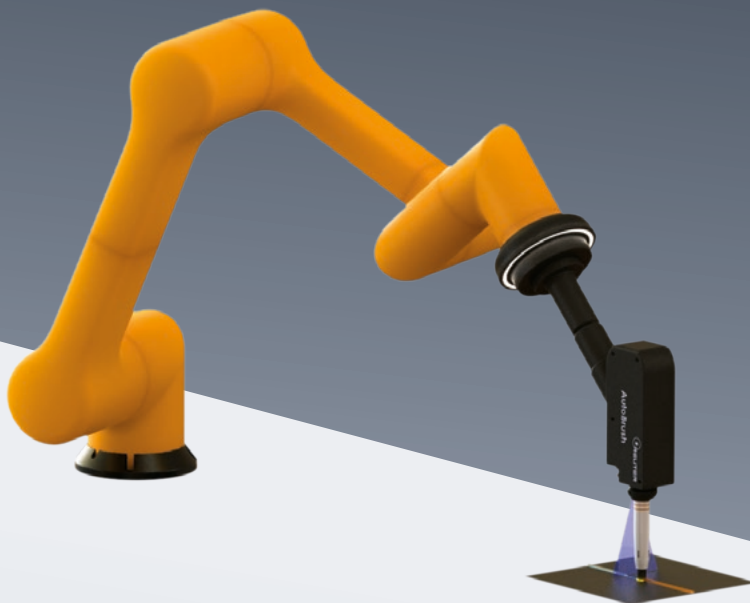
Video:
Hydrojet-Pistole
in action

Registered property rights of Reuter GmbH & Co. KG, which concern products from this catalogue:

- EP 2 868 779 B1
- EP 2 995 409 B1
- DE 20 2014 106 289 U1
- DE 20 2015 100 248 U1
- 004008605
- 9004008605
- DE 20 2017 105 145 U1
- DE 20 2023 103 319 U1
- 10 2023 112 249.5
- 30 2015 002 364

PREVIEW
2024

The RoboCleanox comes



RoboCleanox

The fully automatic robot weld seam cleaning system

- scalable robotics
- automatic electrolyte supply
- waste water treatment plant

AutoBrush

The universal cleaning head for any type of robot

- fully automatic control of brush adjustment
incl. offset recognition for readjustment for wear compensation
and brush change indicator
- Integrated stepper motor
- Water and air jets for after-treatment